

<Software update procedure>

1: It is necessary to update the asio driver to use it with the new software.

Please download and install from our website.

※Your Windows PC must be connected to the internet.

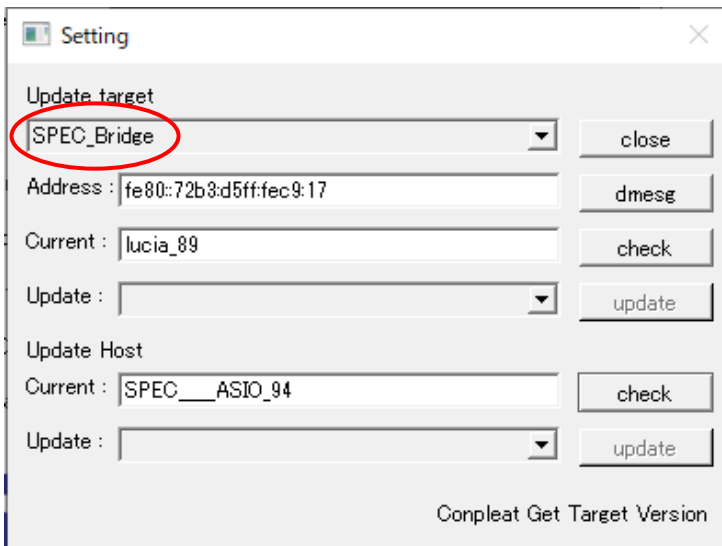
2: Click the Windows Start button and select "SPEC Diretta ASIO" from the SPEC folder.



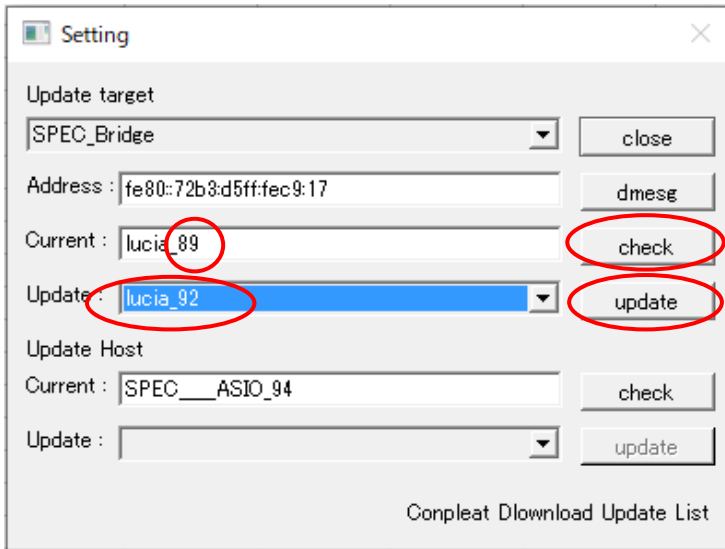
3: "Diretta ASIO Configure" will start, so click "config".



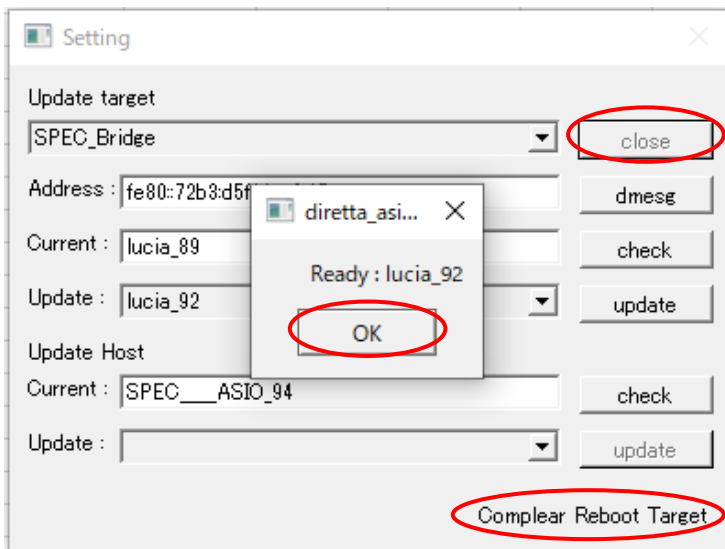
4: The "Setting" screen will start, so check that "SPEC_Bridge" is displayed in Update Target.



5: If you click "Check" and there is new firmware, a display different from the current display (the one with a large value of lucia_xx) will be displayed in the Update section. If the number shown is large, there is a new farm, so click "Update".



6: The firmware download will start and will be updated. (It takes about 2 to 5 minutes.) When completed, "Ready: lucia_xx" will be displayed, so click the OK button. Make sure that "Complear Reboot Target" is displayed, and then click "Close" to exit.



The update is complete.